

Genesis

15,000L Water Cart



AUSTRALIAN MADE
AND OWNED

- ***Pre-Tensioned Sides***
- ***Chassisless - low centre of gravity***
- ***5-Year Structural Warranty***



map
group

CONTENTS

Pre-Tensioned Sides.....	1
Mine Spec. Compliance.....	2
In-Cab Controls.....	3
In-Cab Features.....	4
RHS Fire Extinguisher and Wheel Chocks....	5
Front of Tank.....	6
Tank Fill Indicator.....	7
Drop-Down Steps.....	8
Handrails and Stairs.....	9
Isolators, Jump Start, Emergency Stop.....	10
Control Box.....	11
Grease Points.....	12
Air Tank and LHS Fire Extinguisher.....	13
Rear Tank Components.....	14
Water Dispersion.....	15
Rear Tank Components (cot'd).....	16
Handrail Locking and Funnel.....	17
Aerial.....	18
Wheel Nut Tension Indicators.....	19

Pre-Tensioned Sides



In contrast to the traditional method of pressing or rolling sidewalls and fitting them to the sides, we in fact wrap the walls around the module.

Our unique pre-tensioned water cart side walls give our modules that extra element of safety, strength and longevity. By incorporating 350 grade steel with our pre-tensioned walls, we are able to achieve a 40% stronger body over our competitors.

This results in a water cart that's built to last and perform.

Mine Spec. Compliance



Every module produced by MAP Group is fully compliant with mine specifications. With rotating amber beacons, reverse lights and alarm, jump start receptacle, starter isolator, wheel chocks and emergency stops, you can be sure you'll be safe and seen on site.

The module is also completely labelled and includes reflective strips on both sides for visibility.

In-Cab Controls



Our customisable in-cab control box features easy to operate switches for each element of the water dispersion system meaning full operation can take place from within the cabin. This means a much safer, smoother and faster operating experience. The switches are all electric as opposed to pneumatic meaning no loud noises inside the cabin.

Due to the backlit facia of the console, operation at night time is easy as the screen remains legible at all times.

In-Cab Features



Figure 1. Control Unit

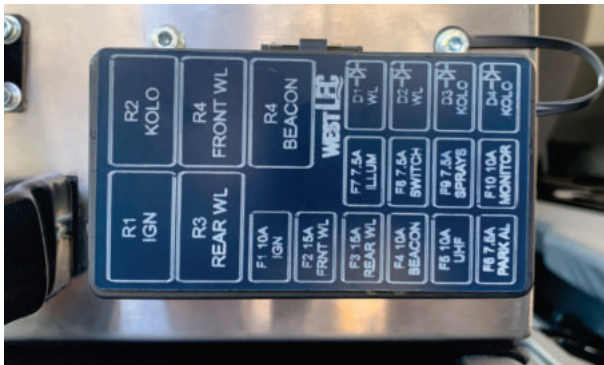


Figure 2. Fuse box on back of control unit

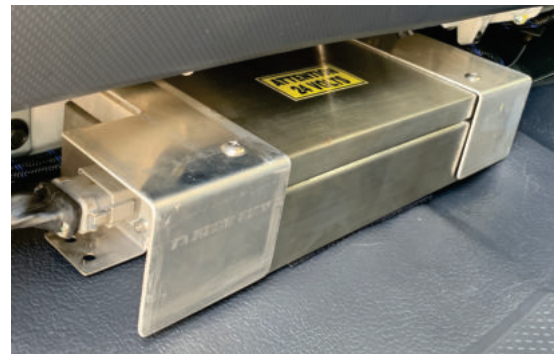


Figure 3. Cannon control box in passenger footwell



Figure 4. First aid kit



Figure 5. Two-way Radio

RHS Fire Extinguisher and Wheel Chocks



Figure 6. 9kg Fire extinguisher behind cab on driver side.



Figure 7. Wheel chocks on front driver side mudguard

Front of Tank



Filler/Breather

Sight Gauge
MIN/MAX level
Temp Gauge

Oil return filter
Service 6 monthly



Spare wheel winch controller plug

Figure 8. Front of the tank



Figure 9. Flow control valve under the steps
Preset for ideal cannon pressure; please do not adjust.

Tank Fill Indicator



Do not fill past the black line on-road

On-Road Level Indicator Valve

Figure 10. Tank fill indicator and ADR level point

Drop-Down Steps



Figure 11. Steps unfolded



Figure 12. Steps locked



Figure 13. Steps unlocked

Handrails and Stairs



Folded down position

Our handrails make the full extent of the water cart module accessible by personnel without any fall risk during maintenance or servicing.

Painted in Y14 Safety Yellow with toolless fold-down abilities, they are fully compliant to AS1657-1992. Utilising two anti-luce fasteners and two gas struts, they are quick and easy to stand up or lay down.

Isolators, Jumpstart, Emergency Stop



Figure 14. Jumpstart Receptacle, Isolators and Emergency Stop



Figure 15. On-road Level Indicator Valve

Control Box



Figure 16. Control box key stored in the cab



Figure 17. Air solenoid control box, key in cab

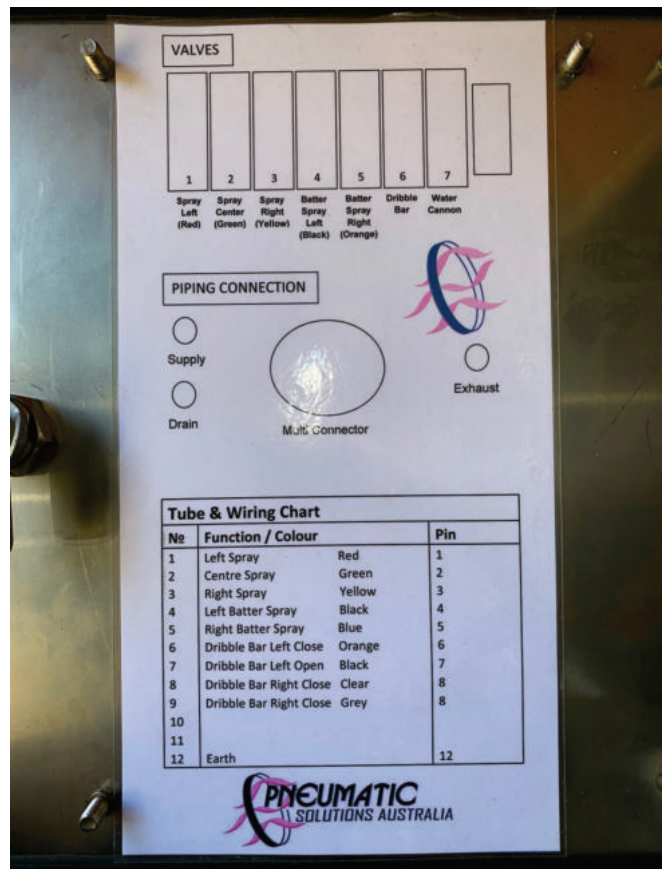


Figure 18. Air solenoid control box diagram

Grease Points



There are four grease points fitted to the truck. They are located in the front grill and on the passenger side behind the cab.



Air Tank and LHS Fire Extinguisher



Figure 19. Air tank on the passenger side



Figure 20. Fire extinguisher on the passenger side

Rear Tank Components

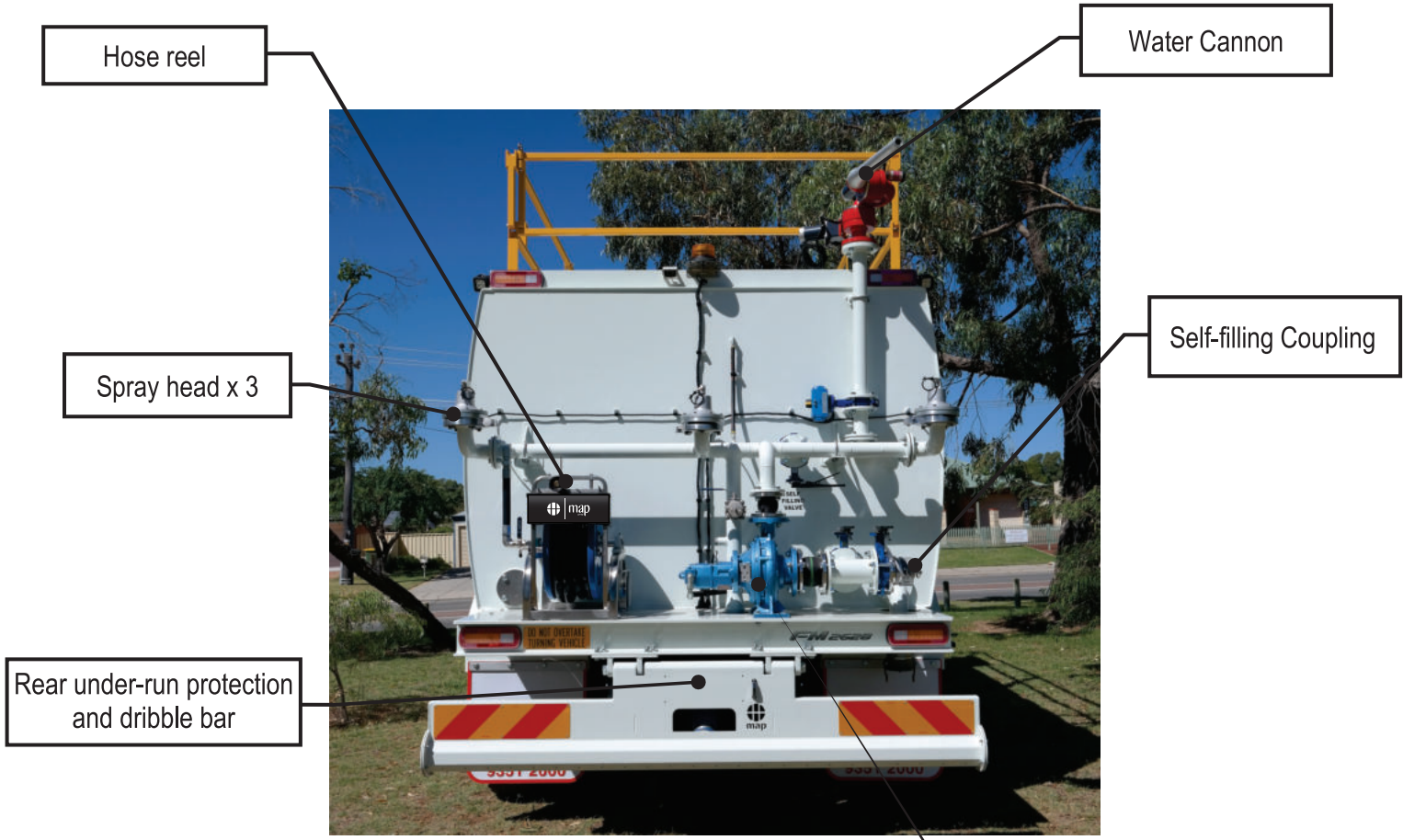


Figure 21. Truck rear

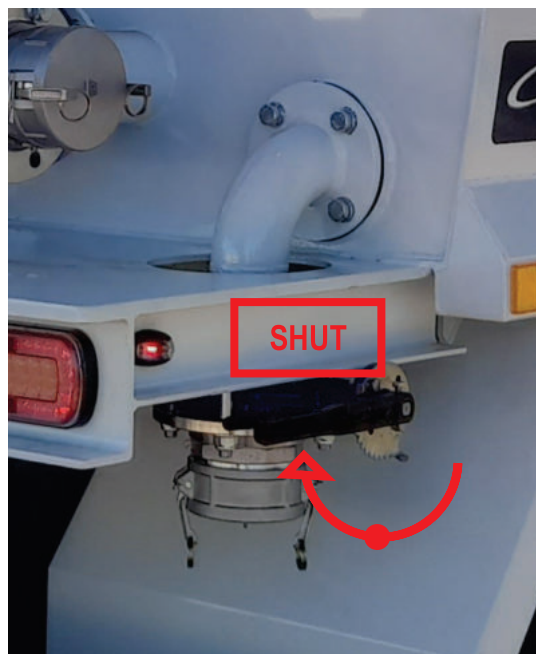


Figure 22. Dump valve on rear driver side

Water Pump

Water Dispersion

Water Cannon

Our cannon of choice is the Magnum RM65H-360 which offers great control and reliability.

We pair this with in-cab controls so you can commence spraying without even leaving the comfort of the cab!

The nozzle is interchangeable and ready for a fogging nozzle if desired.



Spray Heads

We can offer various combinations of spray heads on our water carts.

From none (for potable applications) to 5 heads offering 3 regular sprays with 2 batter sprays.



Dribble Bar

Our dribble bar is fully designed and fabricated by us. Most of our competitors use a piece of drilled pipe for this, however our unique design ensures a tailored fit that not only looks the part, but is also a highly effective underrun protection system as well.



Pipework

All our pipework is galvanised and painted for longevity, integrity and ease of cleaning and maintenance.



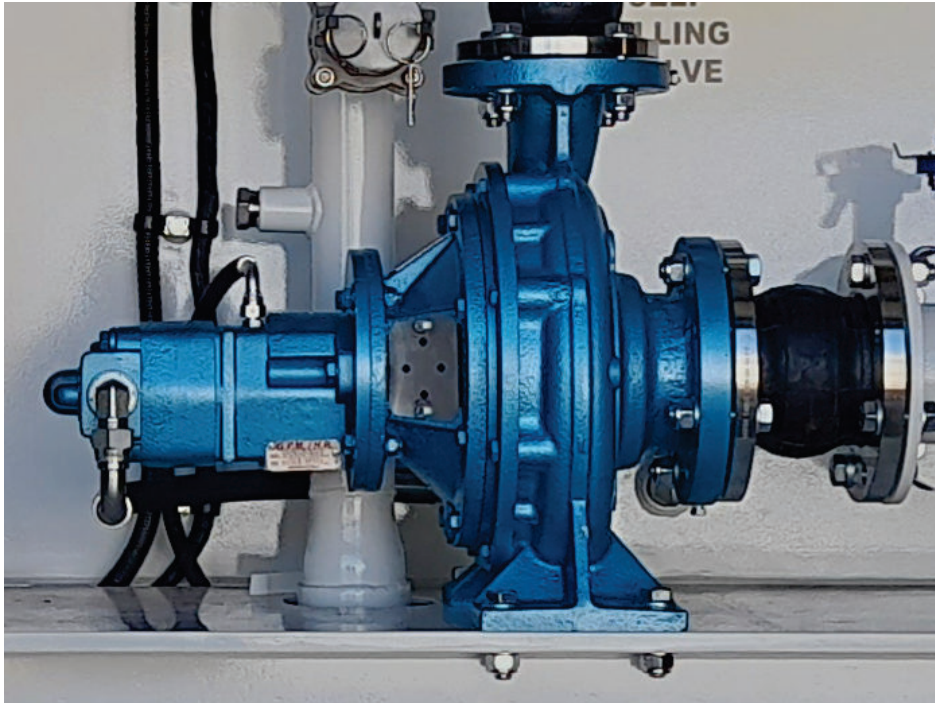


Figure 23. Southern Cross 100 x 65 x 250 Hydraulically driven water pump

Water Pump

Our Southern Cross 100 x 65 x 250 Hydraulically driven pump motor is close-coupled with a Southern Cross volute. Also included are stainless steel impellers, standard with all builds. Equipped with overrun protection and coupled with a bellow, this pump is more than capable of supplying water to all parts of the water cart.

The pump is sandblasted and finished with a two-pack polyurethane 3-coat system.



Ball Valve

Lock



Winder Handle

Figure 24. Hose reel

Hose Reel

We can offer a choice of hose reel depending on requirements and preference.

Our water carts can either come with:

- 20mm x 40m
- or
- 25mm x 25m

Handrail Locking and Funnel



Figure 25. Driver side railing

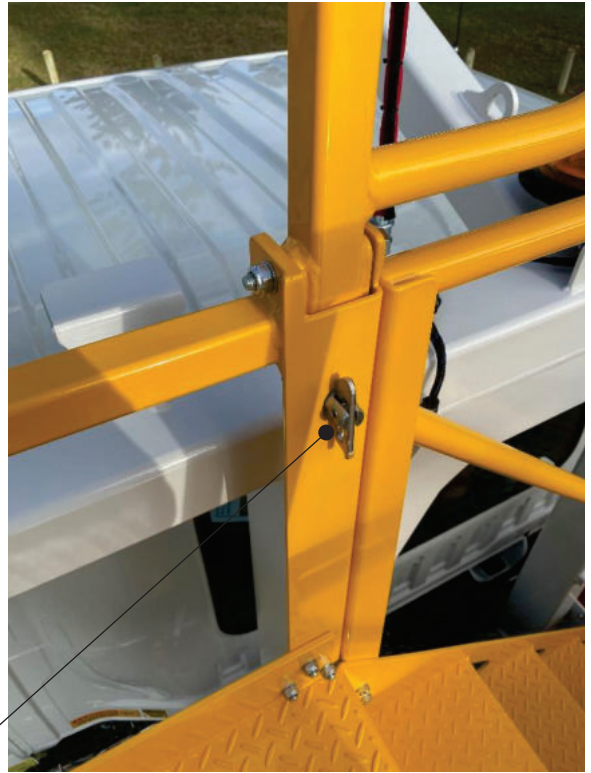


Figure 26. Passenger side railing

Unlock to unfold



Figure 27. Funnel, relocatable to three different positions. On the driver's side by default to aid with standpipe filling.

Aerial

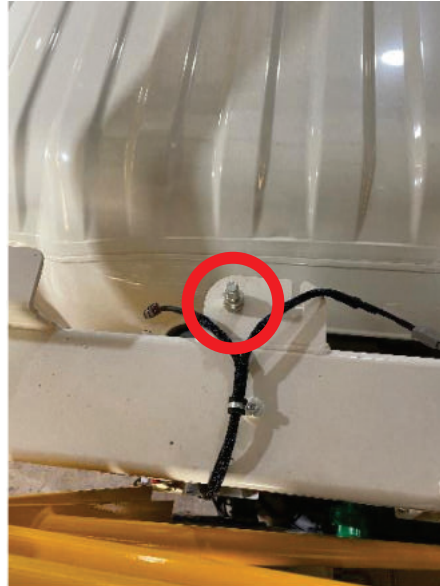


Figure 28. Antenna, stored in the cab

Wheel Nut Tension Indicators



Figure 29. Wheel nut indicators must face each other



Thank you for choosing a MAP Group Product
www.mapgroup.net.au